

Pickleball Trail

color of loops matches color of flags on trail

Park Here

Pickleball Courts

Fire Road

Kwavasa Dr

trail is 4 miles long

Sage Way

Kayenta Wash

W Old Hwy 91

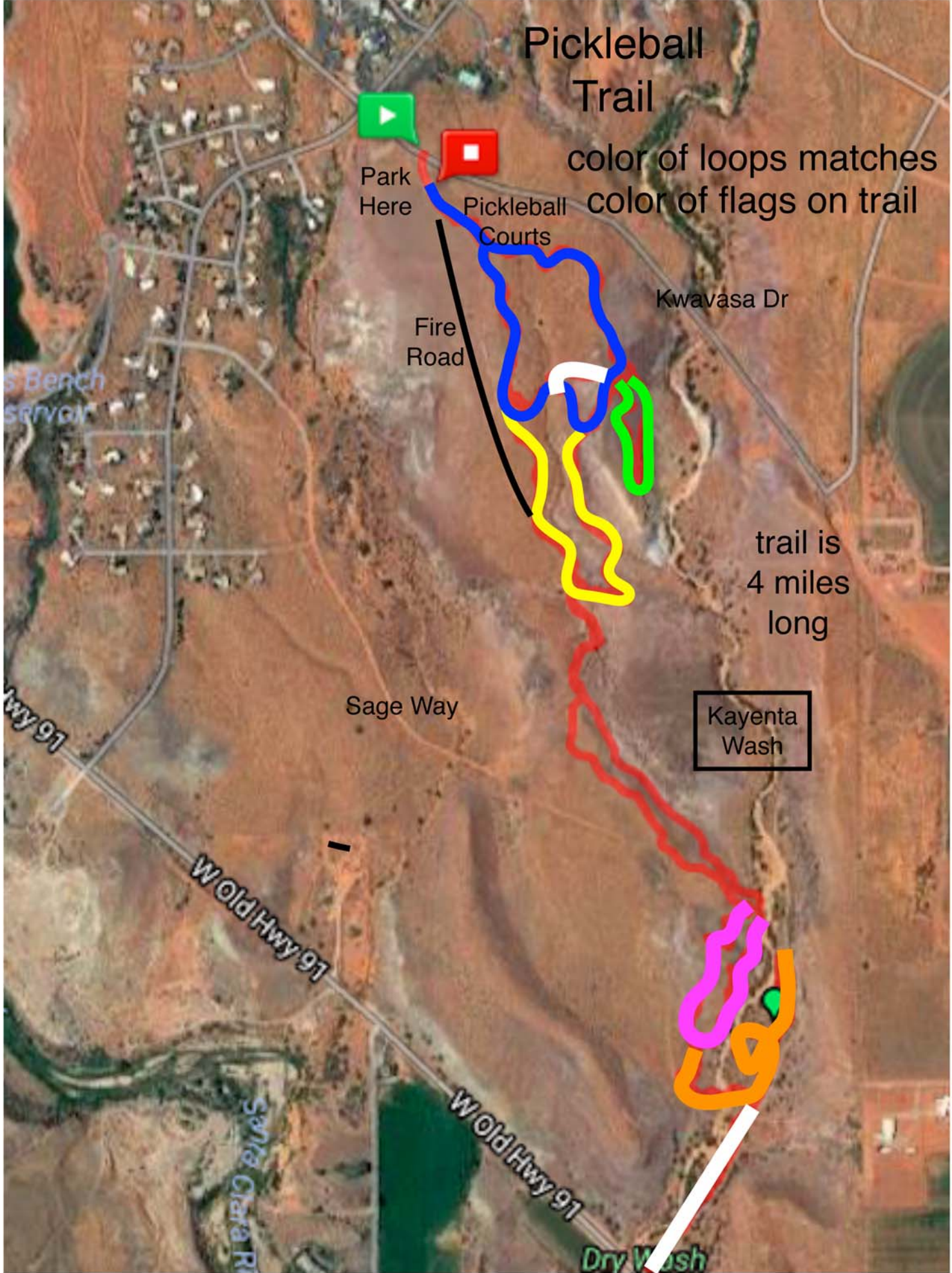
W Old Hwy 91

Dry Wash

s Bench
SERVOIR

W Old Hwy 91

Santa Clara R



**PICKLEBALL TRAIL
LOOP DESCRIPTIONS**

LOOP	TECHNICAL DIFFICULTY	COMMENTS	CAUTIONS
Blue	easy	Trail Head is just inside the gates near the Pickleball courts; trail follows ridge line over Kayenta Wash	
Green	easy	follows ridge line over Kayenta Wash	
Yellow	easy	drops into a wash, a fast trail — both upper and lower branches.	
Red	easy	west/upper branch is quite rocky; this is a "lolly pop" design.	look for "CAUTION" sign, get on the brakes here.
Purple	more difficult,		a twisty downhill; a tough, climbing switchback
Orange	more difficult' down from Purple junction; 'easy' on east side of Kayenta Wash	a figure 8 pattern east of Kayenta Wash.	deep sand while crossing Kayenta Wash, suggest walking your bike here
White - north	easy	bypasses southern end of Blue loop	
White - south	easy	connects to TH at Hwy 91; Anasazi Trail is across the street	